



FLOW TECH SEAL



Manufacturer of :

Mechanical Seal

Industrial Pump

Seal & Pump Spares

Rotary Joints

Tube Fitting

Pipe Fitting

Hose Fitting

Valves

ManiFolds



 www.flowtechseal.com

 info@flowtechseal.com


 flowtechseals85@gmail.com

INTRODUCTION

FLOW TECH SEAL is one of the leading manufacturers of all types of Mechanical Shaft Seals and Industrial Pumps, used in various industries such as Textile, Chemical, Petrochemical, Food Paint, Refrigeration, Beverage, Cement, Pharmaceutical, Ship Building, Power Generation, Steel, and Pump & Motor Manufacturing.

We are a recognized brand in **India**  and have also established a strong presence in **Saudi Arabia** , specializing in the design, manufacturing, and supply of mechanical shaft seals and pumps. The **FLOW TECH SEAL** range of mechanical seals and pumps is produced in a state-of-the-art facility, offering the industry an ideal combination of impeccable quality and economical pricing. For more than two decades, **FLOW TECH SEAL** has demonstrated highly successful performance in Pumps, Agitators, Mixers, Reactors, and Compressors across a wide range of industries.

EXPANSION IN EAST AFRICA

We are proud to announce that **FLOW TECH SEAL** is now starting service of mechanical seals and pumps in **Uganda**  and all other East African countries. This expansion marks a major step forward in our commitment to deliver superior quality, technical support, and reliable after-sales service to our customers in the East African region.

QUALITY POLICY

At **FLOW TECH SEAL**, we are committed to achieving the highest level of customer satisfaction by providing high-quality mechanical seals and pumps. We strive for excellent quality and overall growth through continual improvement in our systems and processes. While competitive pricing is important, our focus remains on ensuring the Longest Mean Time Between Failure (MTBF) during the design and development stages of our products.

THE QUALITY PROGRAM

Since its inception, **FLOW TECH SEAL** has established its own quality standards by implementing strict specifications at every stage of product development, manufacturing, and procurement. We ensure that every seal and pump produced is precise, reliable, and fully compliant with our internal quality benchmarks. This comprehensive quality program is implemented throughout all our operations — including production, sales, and service support.

SERVICE AND CUSTOMER SUPPORT

The philosophy of **FLOW TECH SEAL** is centered on delighting our customers. Our commitment goes beyond delivering reliable products - it includes a deep understanding of customer applications and service conditions, enabling us to design customized mechanical seals and pumps that maximize reliability and performance.

With branch offices and service centers, we provide local service and technical support - no extended to Uganda and all East African countries - to ensure complete custom satisfaction.

OUR OBJECTIVES

Since our establishment in 2010, our guiding objective has been clear: "To provide the process industry with reliable, economical, and high-quality mechanical seals and pumps — indigenously developed — as a market and quality leader."

Regards,
Yours Faithfully,
FLOW TECH SEAL



SINGLE SPRING ELASTOMER BELLOW UNBALANCED SEAL



OPERATING LIMIT

Seal Size : 20 mm to 75mm
 Pressure : 10kg/cm²
 Speed : 13 m/s
 Temp : -20°C.... to 200°C

FACE MATERIAL

Rotary Face : Carbon, Silicon, TC
 Stationary Seats : Ceramic, Silicon, TC, SS
 Type : S-60, S-6, S-9, S-4, S-50

SINGLE SPRING ELASTOMER BELLOW UNBALANCED SEAL

OPERATING LIMIT

Seal Size : 20 mm to 50mm
 Pressure : 10kg/cm²
 Speed : 13m/s
 Temp : -10°C.... to 200°C

FACE MATERIAL

Rotary Face : Carbon, Silicon
 Stationary Seats : Silicon, SS, Ceramic
 Type : S-60, S-6, S-9, S-50



SINGLE SPRING CLUTCH UNBALANCED SEAL



OPERATING LIMIT

Seal Size : 20 mm to 100mm
 Pressure : 10kg/cm²
 Speed : 20 m/s
 Temp : -25°C.... to 180°C

FACE MATERIAL

Rotary Face : Carbon, Silicon, TC
 Stationary Seats : Silicon, TC, SS,
 Type : S-9, S-6, S-4, S-50, S-55

SINGLE SPRING CLUTCH UNBALANCED SEAL

OPERATING LIMIT

Seal Size : 20 mm to 100mm
 Pressure : 10kg/cm²
 Speed : 20 m/s
 Temp : -25°C.... to 250°C

FACE MATERIAL

Rotary Face : Carbon, Silicon, TC
 Stationary Seats : Silicon, TC, SS, Ceramic
 Type : S-9, S-6, S-4, S-50, S-55





CONICAL SPRING ELASTOMER BELLOW UNBALANCED SEAL

OPERATING LIMIT

Seal Size : 15mm to 100mm
 Pressure : 1
 Speed : 10 m/s

FACE MATERIAL

Rotary Face : Carbon, Silicon, TC
 Stationary Seats : Silicon, TC, SS, Ceramic
 Type : S-60, S-50, S-55, S-6, S-9

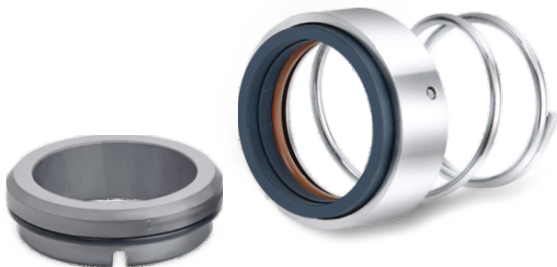
CONICAL SPRING ELASTOMER BELLOW UNBALANCED SEAL

OPERATING LIMIT

Seal Size : 12 mm to 50mm
 Pressure : 10kg/cm²
 Speed : 10m/s
 Temp : -15°C.... to 180°C

FACE MATERIAL

Rotary Face : Ceramic, Silicon, TC
 Stationary Seats : Carbon, Silicon, TC
 Type : S-6, S-4, S-9



CONICAL SPRING BALANCED SEAL

OPERATING LIMIT

Seal Size : 12 mm to 80mm
 Pressure : 10kg/cm²
 Speed : 13 m/s
 Temp : -25°C.... to 200°C

FACE MATERIAL

Rotary Face : Carbon, Silicon, TC
 Stationary Seats : Silicon, TC, SS, Ceramic
 Type : S-9, S-6, S-4, S-13

CONICAL SPRING UNBALANCED SEAL

OPERATING LIMIT

Seal Size : 12 mm to 80mm
 Pressure : 10kg/cm²
 Speed : 10m/s
 Temp : -15°C.... to 180°C

FACE MATERIAL

Rotary Face : Carbon, Silicon, TC
 Stationary Seats : Silicon, TC, SS, Ceramic
 Type : S-9, S-6, S-4, S-13





CONICAL SPRING UNBALANCED SEAL

OPERATING LIMIT

Seal Size : 15 mm to 50mm
 Pressure : 12kg/cm²
 Speed : 10m/s
 Temp : -20°C..... to 200°C

FACE MATERIAL

Rotary Face : Ceramic, Silicon, TC
 Stationary Seats : Silicon, TC, SS, Ceramic
 Type : S-6, S-4, S-9, S-60

DOUBLE MECHANICAL UNBALANCED SEAL

OPERATING LIMIT

Seal Size : 22mm, 30mm, 35mm
 Pressure : 10kg/cm²
 Speed : 10 m/s
 Temp : -15°C..... to 140°C

FACE MATERIAL

Rotary Face : Carbon, Silicon, TC
 Stationary Seats : Silicon, TC, SS, Ceramic
 Type : H-Type, L-Type



MULTI SPRING BALANCED SEAL

OPERATING LIMIT

Seal Size : 20mm to 175mm
 Pressure : 10kg/cm²
 Speed : 20 m/s
 Temp : 20°C..... to 220°C

FACE MATERIAL

Rotary Face : Carbon, Silicon, TC
 Stationary Seats : Silicon, TC, SS, Ceramic
 Type : S-6, S-9, S-4, S-13, S-50

WAVE SPRING UNBALANCED SEAL

OPERATING LIMIT

Seal Size : 20 mm to 200mm
 Pressure : 10kg/cm²
 Speed : 20m/s
 Temp : 20°C..... to 220°C

FACE MATERIAL

Rotary Face : Carbon, Silicon, TC
 Stationary Seats : Silicon, TC, SS, Ceramic
 Type : S-6, S-9, S-4, S-13, S-50





MULTI SPRING UNBALANCED SEAL

OPERATING LIMIT

Seal Size : 20 mm to 100mm
 Pressure : 10kg/cm²
 Speed : 20 m/s
 Temp : -20°C.... to 200°C

FACE MATERIAL

Rotary Face : Carbon, Silicon, TC
 Stationary Seats : Silicon, TC, SS, Ceramic
 Type : S-6, S-9, S-6, S-4, S-13, S-50

MULTI SPRING BALANCED SEAL

OPERATING LIMIT

Seal Size : 20 mm to 50mm
 Pressure : 10kg/cm²
 Speed : 15 m/s
 Temp : -20°C.... to 200°C

FACE MATERIAL

Rotary Face : Carbon, Silicon, TC
 Stationary Seats : Silicon, TC, SS
 Type : S-6, S-9, S-4, S-13,



MULTI SPRING BALANCED/ UNBALANCED SEAL



OPERATING LIMIT

Seal Size : 20 mm to 120mm
 Pressure : 10kg/cm²
 Speed : 20m/s
 Temp : -20°C.... to 180°C

FACE MATERIAL

Rotary Face : Carbon, Silicon, TC
 Stationary Seats : Silicon, TC, SS,
 Type : S-9, S-6, S-4, S-50, S-55

MULTI SPRING BALANCED/ UNBALANCED SEAL

OPERATING LIMIT

Seal Size : 20mm to 120mm
 Pressure : 10kg/cm²
 Speed : 20 m/s
 Temp : -20°C.... to 250°C

FACE MATERIAL

Rotary Face : Carbon, Silicon, TC
 Stationary Seats : Silicon, TC, SS, Ceramic
 Type : S-9, S-6, S-4, S-50, S-55





MULTI SPRING BALANCED SEAL

OPERATING LIMIT

Seal Size : 20mm to 100mm
 Pressure : 10kg/cm²
 Speed : 13m/s
 Temp : -10°C.... to 250°C

FACE MATERIAL

Rotary Face : Carbon, Silicon, TC
 Stationary Seats : Silicon, SS, Ceramic, TC
 Type : T-Type, S-9

MULTI SPRING REVERSE BALANCE SEAL

OPERATING LIMIT

Seal Size : 20 mm to 100 mm
 Pressure : 10kg/cm²
 Speed : 13 m/s
 Temp : -10°C.... to 250°C

FACE MATERIAL

Rotary Face : Carbon, Silicon, TC
 Stationary Seats : Silicon, SS, Ceramic, TC
 Type : T-Type, S-9



METAL BELLOW BALANCED SEAL

OPERATING LIMIT

Seal Size : 25mm to 100mm
 Pressure : 10kg/cm²
 Speed : 20 m/s
 Temp : -20°C.... to 250°C

FACE MATERIAL

Rotary Face : Carbon, Silicon
 Stationary Seats : Silicon, TC, SS, Ceramic
 Type : S-6, S-9, S-4, S-13, S-50

METAL BELLOW UNBALANCED SEAL

OPERATING LIMIT

Seal Size : 25mm to 100mm
 Pressure : 10kg/cm²
 Speed : 20m/s
 Temp : -20°C.... to 250°C

FACE MATERIAL

Rotary Face : Carbon, Silicon
 Stationary Seats : Silicon, TC, SS, Ceramic
 Type : S-6, S-9, S-4, S-13, S-50





TEFLON BELLOW (GFT) UNBALANCED SEAL

OPERATING LIMIT

Seal Size : 20 mm to 120mm
 Pressure : 8kg/cm²
 Speed : 12 m/s
 Temp : -30°C.....to 250°C

FACE MATERIAL

Rotary Face : GFT
 Stationary Seats : Silicon, TC, SS, Ceramic
 Type : T-Type, S-9

TEFLON BELLOW (RCF) UNBALANCED SEAL

OPERATING LIMIT

Seal Size : 20 mm to 120mm
 Pressure : 8kg/cm²
 Speed : 12m/s
 Temp : -30°C.....to 250°C

FACE MATERIAL

Rotary Face : Carbon, Silicon, TC
 Stationary Seats : Silicon, TC, SS, Ceramic
 Type : T-Type, S-9



(G.U.F.) CARTRIDGE BALANCED SEAL

OPERATING LIMIT

Seal Size : 12 mm & 16 mm
 Pressure : 20kg/cm²
 Speed : 15m/s
 Temp : -20°C.....to 200°C

FACE MATERIAL

Rotary Face : Carbon, Silicon, TC
 Stationary Seats : Silicon, TC, SS, Ceramic

(G.U.F.) CARTRIDGE BALANCED SEAL

OPERATING LIMIT

Seal Size : 22mm, 25mm, 28mm
 Pressure : 20kg/cm²
 Speed : 15 m/s
 Temp : -20°C.....to 200°C

FACE MATERIAL

Rotary Face : Carbon, Silicon, TC
 Stationary Seats : Silicon, TC, SS, Ceramic





CARTRIDGE SEAL

SEAL CHARACTERISTIC

Single acting, Balanced, Inside Mounted,
Independent direction of rotation,
Multi-spring design, Sturdy drive mechanism.

SECONDARY SEAL MATERIALS

Viton
PTFE
GFT

AGITATOR SEAL

SEAL CHARACTERISTIC

Single acting, Multiple coil spring,
Independent direction of rotation,
Balanced

FACE MATERIAL

Rotary Face : Carbon, Silicon, TC
Stationary Seats : Silicon, SS, Ceramic, TC



(G.U.F.) CARTRIDGE BALANCED SEAL

SEAL CHARACTERISTIC

Seal Size : 20 TO 150mm (0.78" TO 6")
Pressure : Upto 10 bar (km/cm²)
Temperature : -20 to 350 C
Shaft Speed : Upto 2800 rpm

FACE MATERIAL

Tungsten Carbide
Silicon Carbide
Carbon, Stellite

ROTARY JOINT

SEAL CHARACTERISTIC

Seal Size : 3/8" to 5 in all Connection
Pressure : Upto 275 bar
Temperature : -20 to 350 C
Shaft Speed : Upto 2800 rpm
Flow : Upto 200lpm

FACE MATERIAL

Tungsten Carbide
Silicon Carbide
Carbon, Stellite



TEXTILE SEAL



COMPRESSOR SEAL





FTPP CORROSION RESISTANCE MOULDED PUMP

The FTTP Series consists of non-metallic centrifugal pumps with injection- molded volute casings, designed for back pull-out and end suction applications. Polypropylene, a rigid vinyl polymer with low density, is utilized due to its temperature resistance of up to 70°C.

APPLICATION

- + Steel Plant, Pickling Plant, Scrubbing.
- + High Temperature & Hazardous Toxic Chemical.
- + Pharmaceutical Industries.

Operating Frequency	: 50 Hz
Capacity (Q) Max	: 200 m ³ /hr
Head (H) Max	: 50m
Maximum Temperature PP	: 70°C

FTL CORROSION RESISTANCE LINED PUMP

APPLICATION

- + Acidic & Alkaline Chemicals of Chlor Alkali Industries.
- + Steel Plant, Pickling Plant, Scrubbing
- + High Temperature & Hazardous Toxic Chemical.
- + Pharmaceutical Industries.



Operating Frequency	: 50 Hz
Capacity (Q) Max	: 200 m ³ /hr
Head (H) Max	: 95m
Motor Power (P) Max	: 55kw
Maximum Pressure	: 16 bar

Maximum Working Temperature
 FEP: 180°C, PFA: 200°C PVDF: 110°C
 Available MOC : PVDF, FEP, PFA



FTO METALIC END SUCTION BACK PULL-OUT PUMP

Chemical Process Pump Having top centerline discharge self - venting casting arranged for back pull out fully Confined gasket Foot Support under casing for maximum resistance to misalignment and distortion from pipe loads.

MATERIAL OF CONSTRUCTION

Impeller : Cast Iron / SS-316, Cast Steel / Bronze, etc.
 Pump Casing: Cast Iron / SS-316, Cast Steel / Bronze, etc.
 Shaft / Sleeve: SS - 410 / SS - 316 / SS - 304
 Sealing Mechanical Seal / Gland Packing
 Available MOC: Cast iron, SS Cast Steel.

Capacity	: 400 m ³ /Hr
Head	: Up to 100 m
Temperature	: 350°C



FTA AXIAL FLOW PUMPS

An axial flow pump is a type of pump that is designed to move fluid parallel to the pump shaft's axis. It is commonly used in applications where large volumes of fluid need to be moved at relatively low pressures.

Capacity : 15,000 M3/Hr
 Low NPSH REQUIRMENT
 Head UPTO 30 FEET (9.2M0
 Temperature : 300°C

AVAILABLE IN 6-36" (150-900 mm) Larger sizes also available

Moc: Ss316, Austenitic Stainless Steel, Duplex Alloys, Nickel, Nickel-chrome Alloys, Nickel-chrome-moly Alloys, Titanium And Other Alloys As Required For The Service

FTV VERTICAL GLANDLESS PUMPS

Vertical Glandless Pumps obviate the requirement for gland packing and sealing ensuring a leakproof operation. Additionally they can operate without any adverse effect on the rotating components even when running dry.



RANGE OF COVERAGE

PRESSURE MAX : 5Kg/Cm*
 FLOWMAX : 45m3/hr
 TEMPERATURE : 100°C
 MOC : PP, UHMWPE

FTAIR-OPERATED DOUBLE DIAPHRAGM PUMPS



- + NO ELECTRIC MOTOR REQUIRED
- + NO MECHANICAL SEAL OR GLAND PACKING
- + THE PUMPS CAN RUN DRY INDEFINITELY WITHOUT DAMAGE
- + VARIABLE FLOW IN DIFFERENT AIR PRESSURE
- + SELF PRIMING FROM A DRY START
- + PRESSURE UP TO 100PSI(7 BAR)
- + GENTLE NON-SHEARING ACTION
- + EASY MAINTENANCE
- + PORTABLE TYPE

Available MOC: PP, PVDF, SS, ALU
 Available Size : 1/2", 1", 1 1/2", 2"

APPLICATION

- + SOLVENTS
- + ACIDS
- + CAUSTICS
- + HIGH VISCOUS LIQUID
- + ABRASIVE MEDIA
- + HAZARADOUS & FLAMMABLE LIQUID



RANGE OF COVERAGE

Capacity : 200 m³/hr
 Pressure : 24 bar
 Viscosity : 100000 Cst
 Temp : 200°C

FTSC HELICAL SCREW PUMP

These pumps are meticulously designed to effectively transfer liquids with diverse chemical properties and variable viscosities. Customization options are available to tailor the pumps according to specific application requirements. The operation of these pumps relies on a precisely machined metallic rotor with a single external helix and a double internal helix elastomer stator. Fluid transfer occurs through the cavities formed by the rotation of the rotor within the stator

FTSP SELF-PRIMING CENTRIFUGAL MUD/SEWAGE

MSP/SPM pump is perfect self-priming action with a maximum suction head of 8 meters. The back pull-out design simplifies inspection and maintenance. An impeller with a wider flow passage avoids clogging and handles solids up to 25mm in diameter. Compact light weight and vet-rugged construction.

RANGE OF COVERAGE

Solids up to 17 mm.
 Max. Capacity : 77 lps
 Max.Head : 64 meters.
 The power rating for motor drive : 1.0 HP to 7.5 HP
 MOC : CI, SS316, SS 304



FTG ROTARY GEAR PUMP

Positive displacement external rotary gear pumps offer a practical and efficient solution for handling oils and viscous liquids. With their simple design, lownoise levels, high efficiency, and ease of, maintenance, these pumps are a reliable choice for various industrial applications.

RANGE OF COVERAGE

Sizes : 1/2" to 3" BSP
 Capacity : 5 LPM to 500 LPM
 Pressure : upto 10kg / Cm²
 Moc. : C.I.SS.
 Also Available In Flanged End.



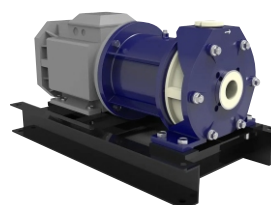
FTM - METALIC MAGNATIC PUMP (SEAL LESS)

Capacity : 180 m³/hr
 Head : Upto 100m
 Pressure : 10 bar
 Temperature : upto 80°C
 Max Operating Speed : 3600 rpm
 Moc S.s - C.s - H.c



FTN - NON METALIC MAGNATIC PUMP (SEAL LESS)

Capacity : 80 m³/hr
 Head : Upto 60m
 Pressure : 6 bar
 Temperature : upto 80°C
 Max Operating Speed : 3600 rpm
 Moc : PP - PVDF - GFRPP



CNC TURNED COMPONENTS

Clients can avail from us supreme quality CNC TURNED Components. The offered components are fabricated using high grade stainless steel that is tested at every stage of production to make sure the durability and high functionality. Known for their excellent resistance against corrosion and rust, accurate dimensions, robust design, clean finish, compact design, superior performance and precisely engineered, these are highly admired by the clients.



CNC PRECISION CNC TURNING COMPONENTS

We are broadly engaged in offering a qualitative Precision Turning Component that is suitable for various mechanical installations. Our turning component is manufactured from high grade of metal alloys with the aid of modern machinery. Also, this turning component is inspected by our quality experts on well-defined parameters so as to deliver a flawless range.



INSTRUMENTATION TUBE FITTINGS

Tube Fittings And Instrumentation And Process Control Parts. We Have Aligned Our Process From Design To Delivery To Achieve Highest Customer Satisfaction. Our Product Range Includes Instrument Fittings, Ferrule Compression Tube Fittings With Varous Pressure And Material.



INSTRUMENTATION PIPE FITTINGS

Manufacturing Pipe Fittings And Instrumentation And Process Control Parts. We have Aligned Our Process From Design To Delivery To Achieve Highest Customer Satisfaction. Our Product Range Includes Pipe Fittings, Pipe Accessories With Varous Pressure And Material.

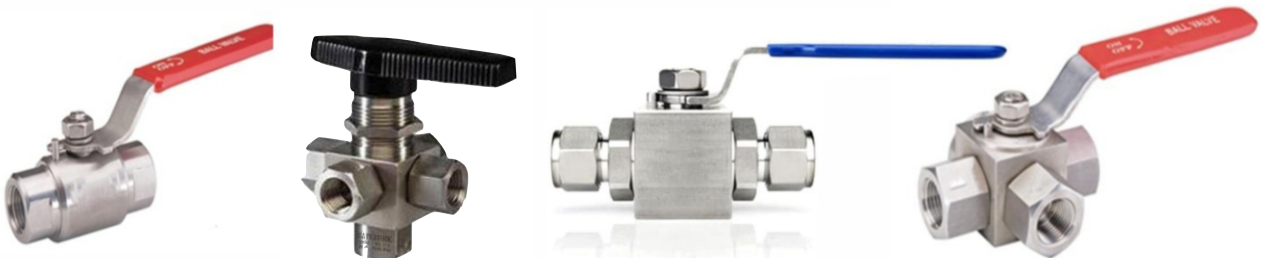


INSTRUMENTATION TUBE FITTINGS



INSTRUMENTATION VALVES

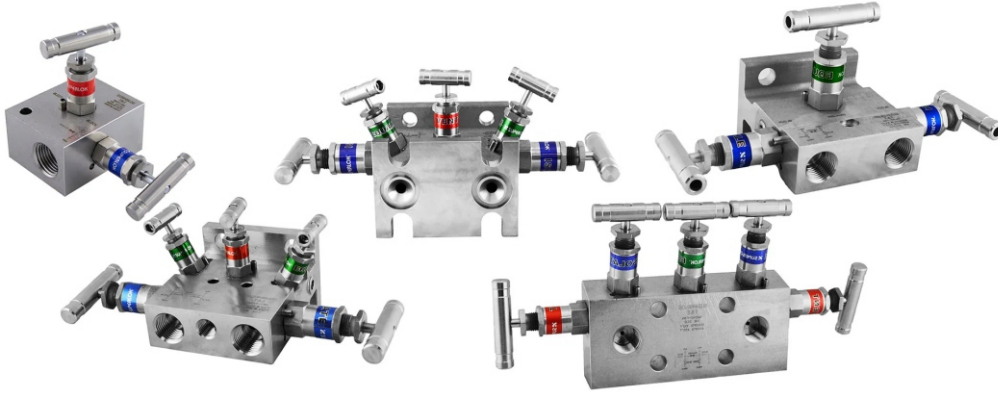
BALL VALVE



NEEDLE VALVE



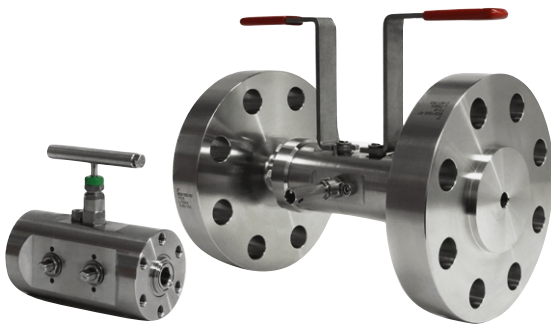
MANIFOLDS



MONO FLANGE VALVES



DOUBLE BLOCK AND BLEED VALVE



TOGGLE VALVE



BLOCK AND BLEED VALVE



PROFESSIONALS ENGINEERS

SKILLED TECHNICIAN

RSD EXPERTS

REPAIRING EXPERTS

WAREHOUSING EXPERTS

QUALITY CHECKERS



FLOW TECH SEAL



B/501, Abul Kalam bldg.
Momin Nager, Patel Estate Road.,
Jogeshwari (W), Mumbai - 400 102.
Maharashtra (INDIA)
Mob.: +91 88287 58562



محل عمري بن عمار بن هلال المطيري للادوات الصحية
Al Faisallah, Riyadh,
Kingdom of Saudi Arabia,
Mob.: +966 56 275 9145



Plot 197, Beside Daab house,
Mukalazi Road,
Bukoto, kampala - Pin 11223
UGANDA
Mob.: +256769183453



www.flowtechseal.com



info@flowtechseal.com



flowtechseals85@gmail.com